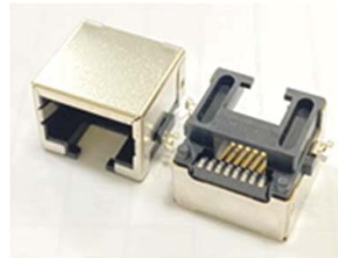


## Product Application

- Industrial robot
- Gateway
- Switches
- Smart television
- Routers
- DataCenter
- Multifunctional business machine
- elevator



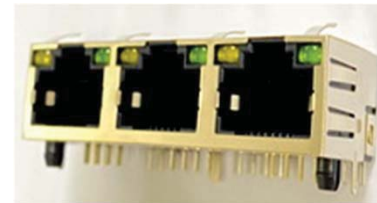
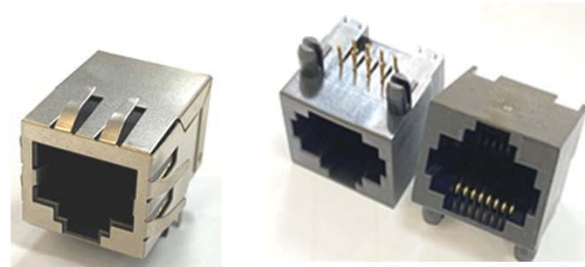
## RJ45 PCB MODULAR JACK



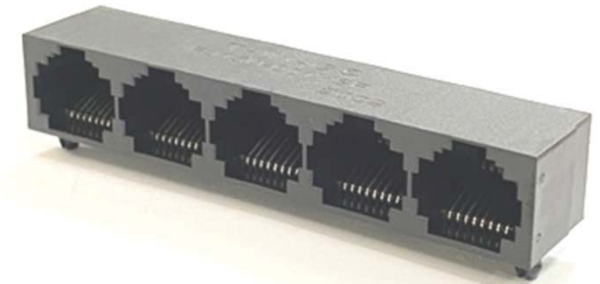
SMT



CAT 5E



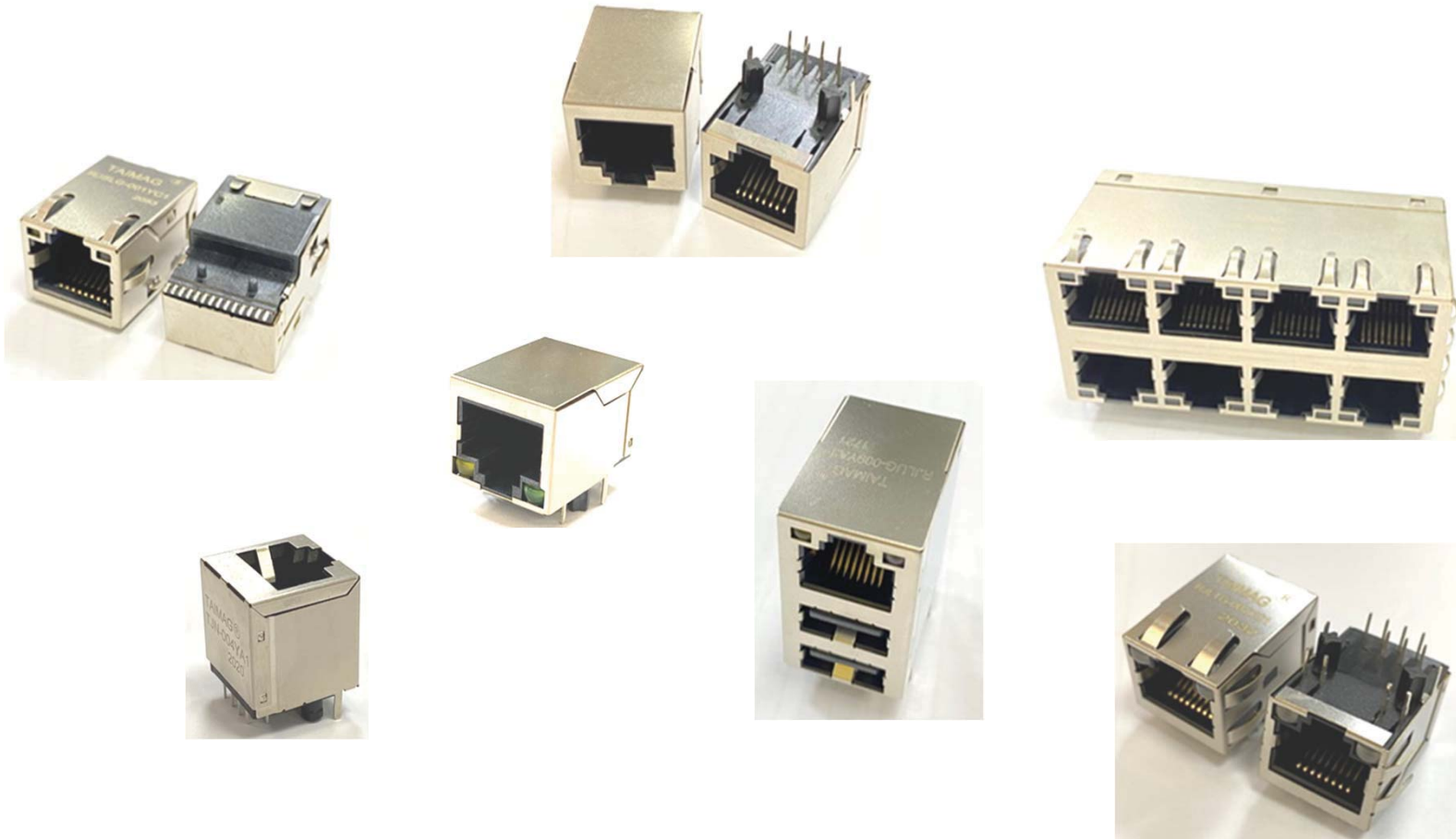
1XN series ( w& w/o LED & Shield )



Vertical series ( w& w/o LED & Shield)

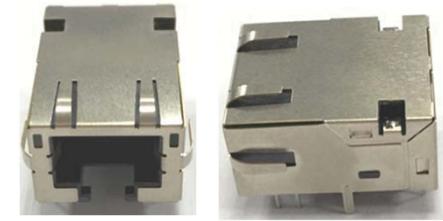
## ◆ RJ45 Ethernet Connector Modules ( 10/100BASE-T & 10/100/1000BASE-T )

- ▲ ROHS Compliant
- ▲ THT, SMT Options
- ▲ Top and Side-Entry PCB Mount Options Available
- ▲ Multiple Package Options Available, 1×1, 1xN, 2xN, RJ45/USB
- ▲ Operation Temperature : -40°C ~+85°C



## ◆ 2.5G / 5G / 10G Single Port

- ▲ ROHS Compliant
- ▲ Extended Temperature -40°C~+85 °C
- ▲ POE & POE+



Application	2.5G	2.5G	2.5G	2.5G	2.5G	5G
Model Name	<b>TJV-001YA1</b>	<b>TJLV-001YA1</b>	<b>RJLV-001YC3</b>	<b>RJLTV-001YC3</b>	<b>RJLV-003YC3</b>	<b>RJLV-002YC3</b>
POE	NA	NA	NA	NA	NA	NA
Operation Temperature	0°C to +70°C	0°C to +70°C	0°C to +70°C	0°C to +70°C	0°C to +70°C	0°C to +70°C
LED	w/o	G / G&Y	G&Y / G	Y / G	Y / G	G&Y / G
Package	Top	Top	Tab down Side-Entry	Tab up Side-Entry	Tab down Side-Entry	Tab down Side-Entry

Application	10G			
Model Name	<b>RJLZ-001YC3</b>	<b>RJLZ-005YA3</b>	<b>RJLZ-008YA3</b>	<b>RJPLTZ-001YC3</b>
POE	NA	NA	NA	802.3at
Operation Temperature	0°C to +70°C	-40°C to +85°C	-40°C to +85°C	-40°C to +85°C
LED	G&Y / G	G / AMBER	G / O	G&Y / G&Y
Package	Tab down Side-Entry	Tab down Side-Entry	Tab down Side-Entry	Tab up Side-Entry

